



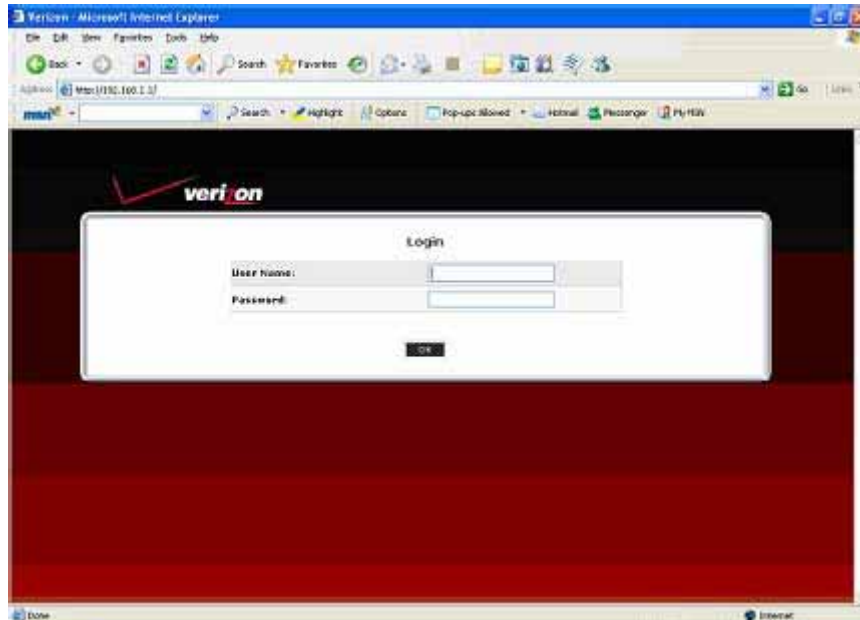
Procedure to Upgrade Verizon FiOS Router and Configure Xbox 360 to connect with Microsoft USB WiFi Adapter

Overview

The current firmware version for the Verizon FiOS Router is **4.0.16.1.55.0.10.4.3**. Any version prior to this should be upgraded. The details on the following pages provide the step by step process on how to upgrade the Verizon FiOS Router and configure the Xbox 360 using Microsoft USB WiFi Adapter

Firmware Verification: The process to perform manual firmware verification is shown below.

Step	Action
1	To access Router's web GUI 1. Type http://192.168.1.1 in the address bar of the Browser. 2. Then, enter the "User Name" and "Password" (default user name is admin, default password is password or password1) 3. Click "OK"

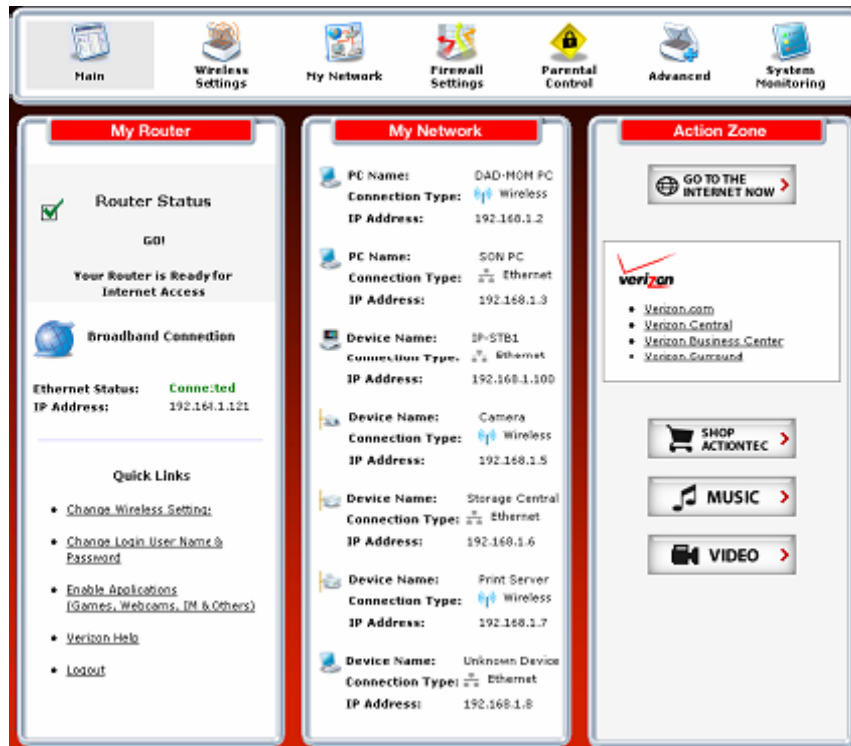


Step

Action

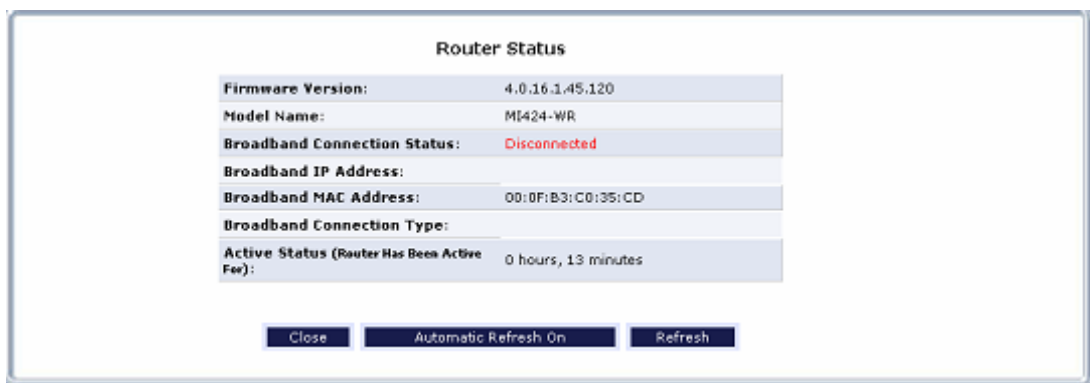
2

The "Home" screen will appear. Click the "System Monitoring" icon.



3

The "Router Status" screen will appear. Verify that the current firmware version is "4.0.16.1.45.120". Any number less than this means the router needs to be upgraded. e.g., 4.0.16.1.55.0.10.4 needs to be upgraded. If your router is already 4.0.16.1.55.0.10.4.3 then skip to page 12.



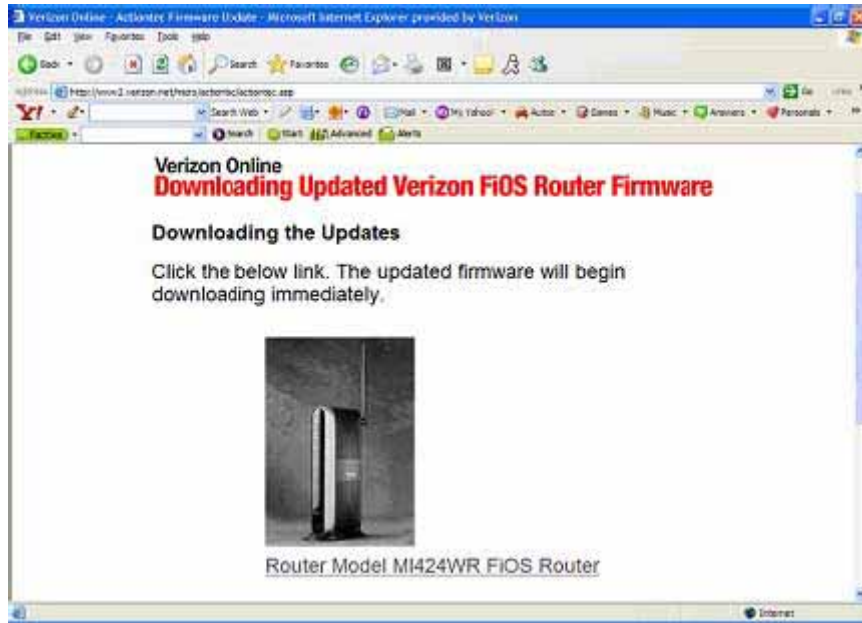
Firmware Download: The process for a customer to perform a manual firmware download is shown below.

Step	Action
------	--------

- | | |
|---|---|
| 1 | Open Internet Explorer and type http://www.verizon.net/actiontecbhr into the address bar. Click "GO" to continue. |
|---|---|



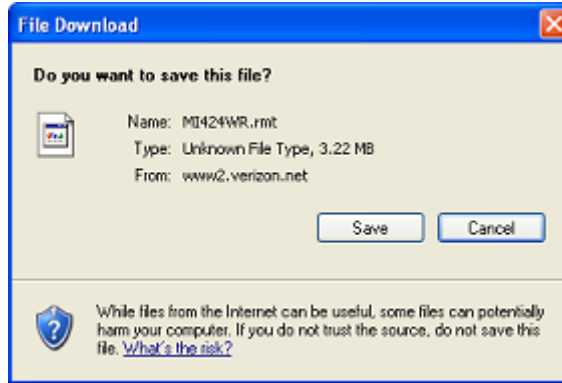
- | | |
|---|---|
| 2 | The "Verizon FiOS Router" page will appear. Click the Router Model MI424 MoCA FiOS Router link to begin the download. |
|---|---|



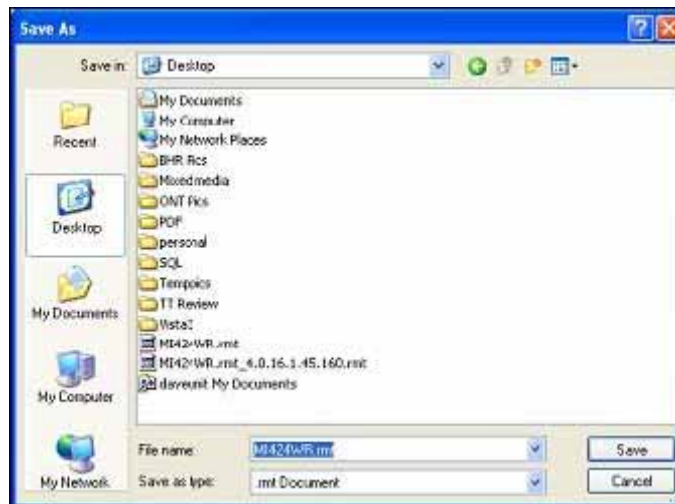
Step

Action

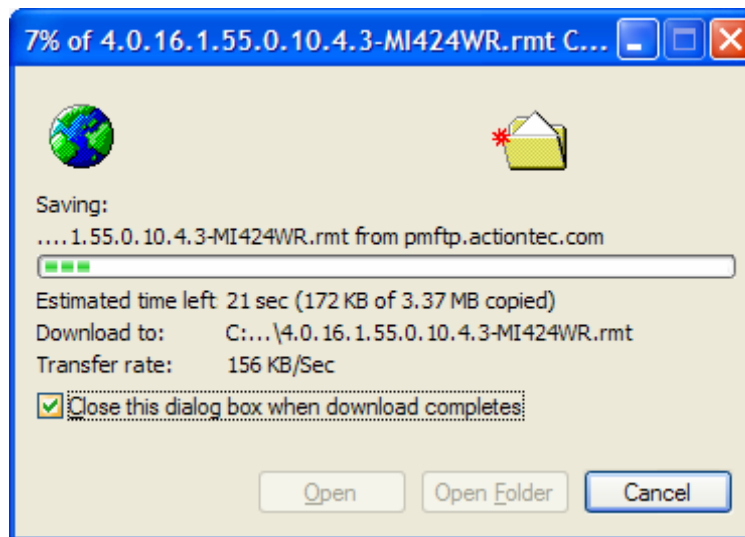
- 3 The "File Download" screen will appear. Click Save to continue.



- 4 The "Save As" screen will appear. Select the Desktop icon for the left-hand side. Click Save to continue.



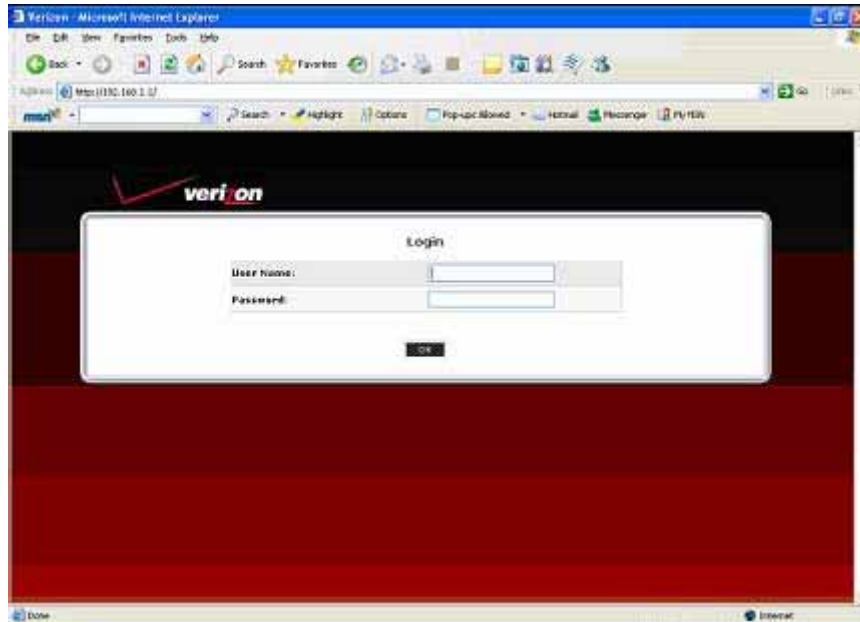
- 5 The "Download Progress" screen will appear. This will only take a few moments to complete.



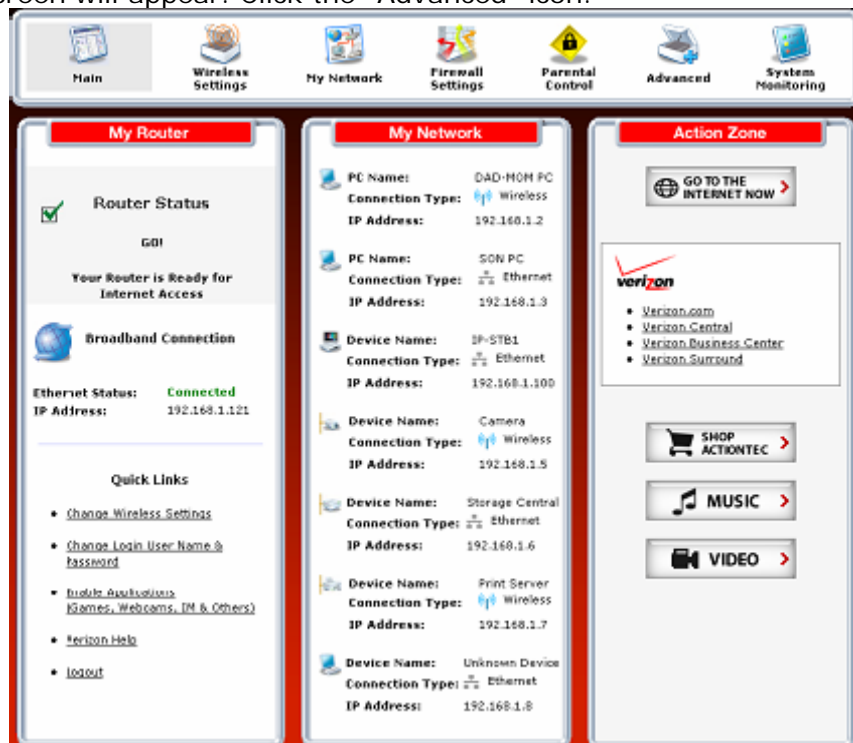
Manual Firmware Upgrade: The process for a customer to perform a manual firmware upgrade is shown below.

Note: *Hardwire Ethernet connection to the router must be used when performing a firmware update. Updating the router over a wireless connection may not complete successfully.*

Step	Action
1	To access the Router's web GUI 1. Type http://192.168.1.1 in the address bar of the Browser. 2. Then, enter the "User Name" and "Password" 3. Click "OK"



2	The "Home" screen will appear. Click the "Advanced" icon.
---	---



- 3 The **“Warning”** screen will appear. Click Yes to continue.



- 4 The **“Advanced”** screen will appear. Click **“Firmware Upgrade”** to continue.

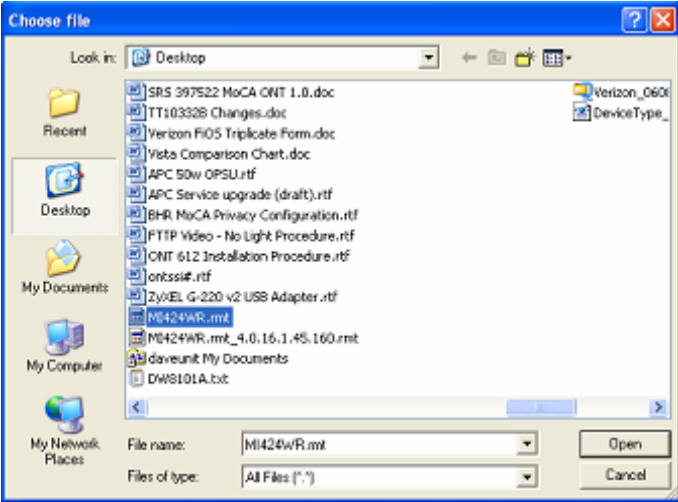
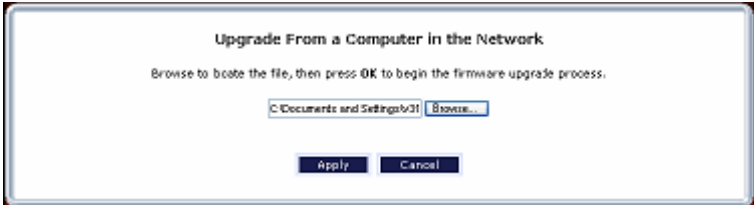




- 5 The **“Firmware Upgrade”** screen will appear. Click **“Upgrade Now”** to continue.



- 6 The **“Upgrade From a Computer in the Network”** screen will appear. Click **“Browse”** to continue.



Step	Action
7	<p>The “Choose File” pop-up will appear. Select the file “MI424WR.rmt” and click “Open” to continue.</p> 
8	<p>The local file location will be populated. Click “Apply” to continue.</p> 
9	<p>The “Firmware Upgrade” screen will appear. Click “Apply” to begin the firmware upgrade.</p> 
10	<p>The local file location will be populated. Click “OK” to begin the firmware upgrade.</p> 
11	<p>After router completes the firmware upgrade, power cycle the router.</p>

Wireless Xbox 360® Setup Procedure

Step

Action

1

Follow these steps after upgrading the router with the 4.0.16.1.55.0.10.4.3 firmware and after power cycling the router.

This process is important - even if the WEP key and SSID from the router have already been entered into the USB wireless adapter.

Go into the management console of the router (<http://192.168.1.1>) (Use router username and password (defaults are **Username:** admin **Password:** password or password1). Select Wireless Settings from the router console; **write down the SSID and WEP key (they will be needed later)**.

The screenshot displays the 'Wireless Status' page of a router's management console. The page is divided into a top navigation bar with icons for Main, Wireless Settings, Network, Firewall Settings, Parental Control, Advanced, and System Monitoring. A left sidebar contains a menu with options: Main, Wireless Status (highlighted), Basic Security Settings, Advanced Security Settings, and Logout. The main content area shows the following wireless status information:

Property	Value
SSID	4PUN0
Channel	9
Security Enabled	YES
WEP 64-bit	0FB310728
WPA	N/A
SSID Broadcast	Enabled
MAC Authentication	Disabled
Wireless Mode	Mixed accepts 802.11b and 802.11g connections
Packets Sent	0
Packets Received	0

Note: In order for a PC to connect to the router through a wireless signal, it must be configured with the appropriate SSID and WEP key.

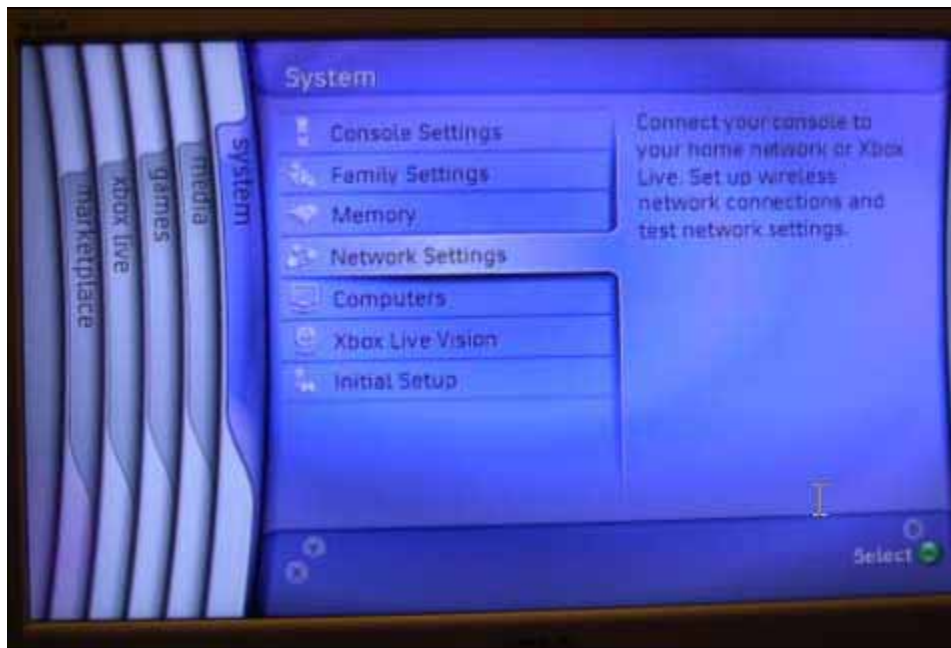
Wireless Xbox 360® Setup Procedure (continued)

Step

Action

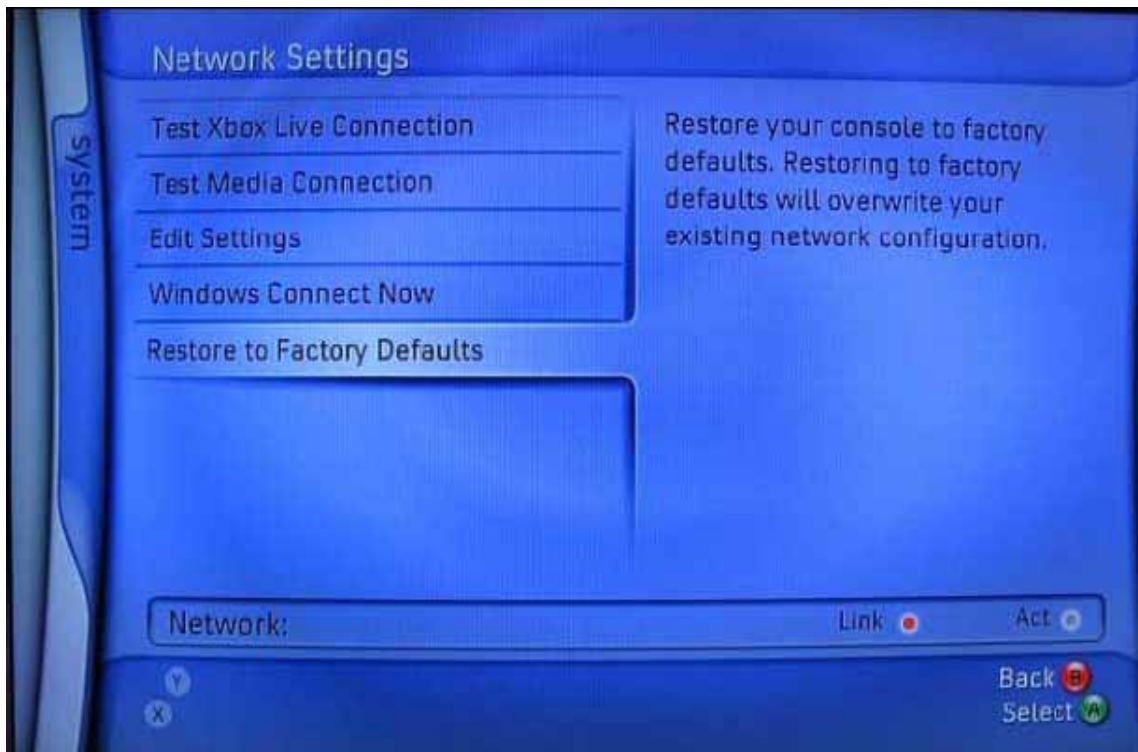
2


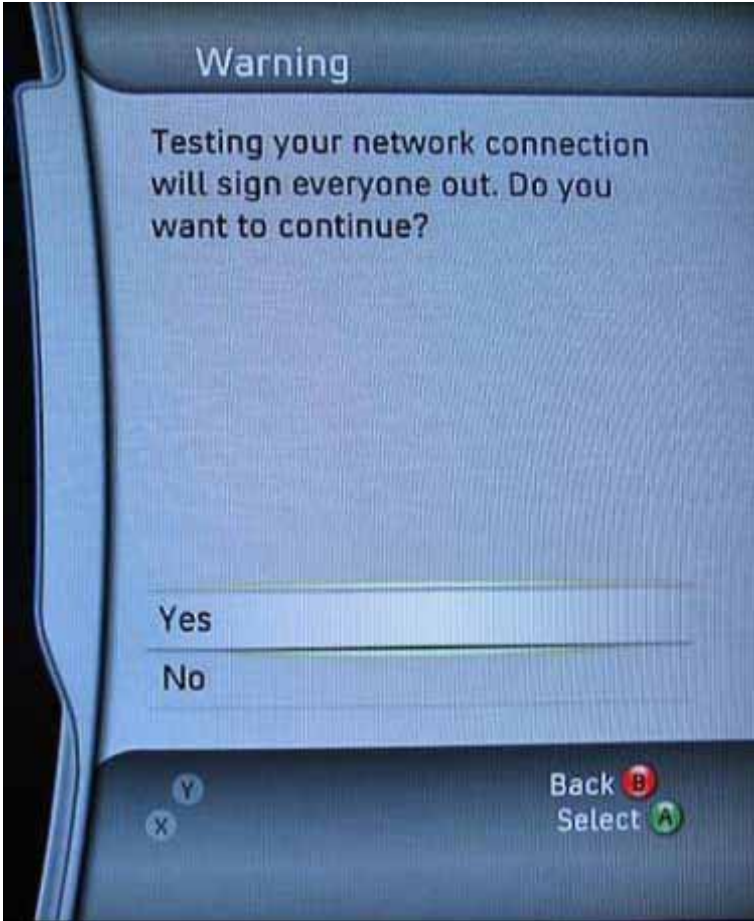
From the Xbox 360® Dashboard, select the System tab and choose Network Settings. Press **A** to continue.



3

From the Network Settings screen, reset the Xbox 360® by selecting the Restore to Factory Defaults choice (5th selection). Press **A** to continue.



Step	Action
<p data-bbox="159 132 183 163">4</p>	<p data-bbox="272 132 1484 163">You will then be prompted to Apply Settings, highlight Test Media and press A to proceed.</p> 
<p data-bbox="159 850 183 882">5</p>	<p data-bbox="272 850 1484 947">If the Xbox 360[®] was previously configured to connect with an Access Point the warning screen below will display. Press A to complete the Restore to Factory Default process. The Network Settings screen will then display. Continue to step 6.</p> 

Step	Action
<p data-bbox="159 132 183 163">6</p>	<p data-bbox="272 132 1534 226">The Test Media Connection screen will display. The Wireless Network status will show as “Not Connected”. The Xbox 360 ® will now need to be reconfigured to add the router SSID and WEP key. Press B to return to the Network Settings screen.</p> <div data-bbox="386 254 1414 909" data-label="Image"> </div>
<p data-bbox="159 976 183 1008">7</p>	<p data-bbox="272 976 1011 1008">Select edit settings (3rd selection). Press A to continue.</p> <div data-bbox="342 1041 1458 1751" data-label="Image"> </div>

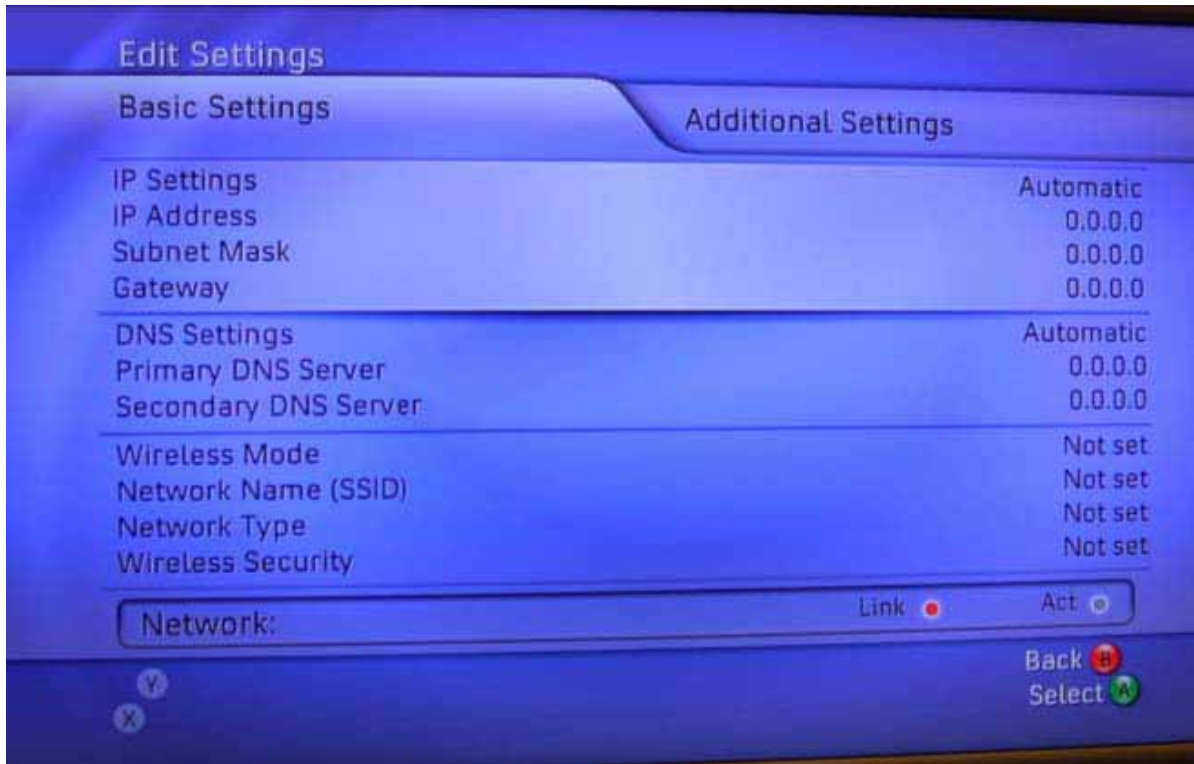
Wireless Xbox 360® Setup Procedure (continued)

Step

Action

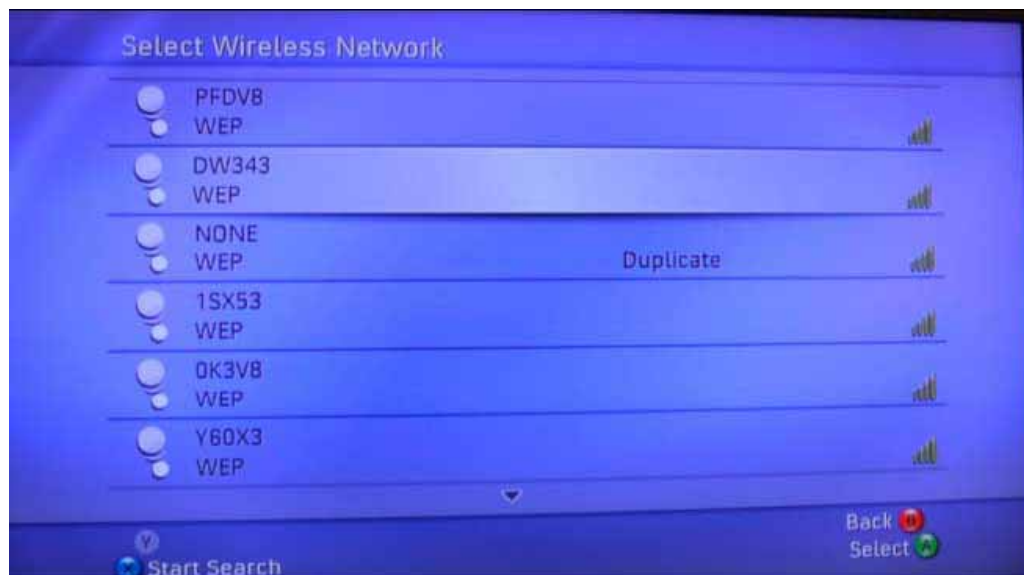
8

Highlight and select the Wireless Mode area of the screen. Press **A** to continue



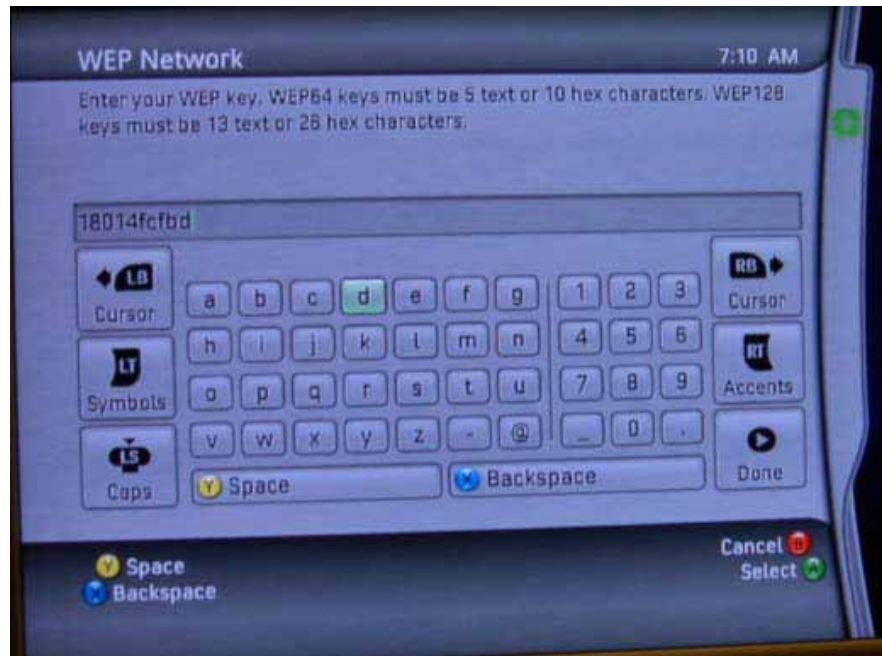
9

From the Xbox 360® display of wireless networks found, select the router SSID (refer to step 1 on page 15). Press **A** to continue.

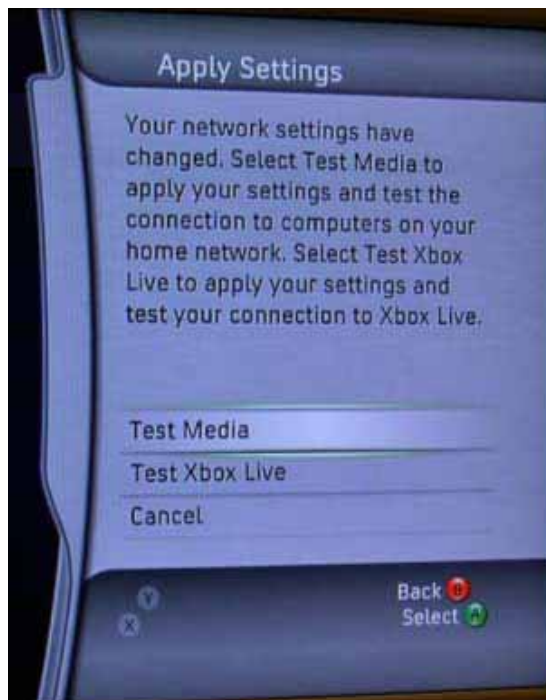


Step**Action****10**

From the Xbox 360® display, enter the router WEP key (refer to step 1 on page 15). When finished, select Done and press **A** to continue.

**11**

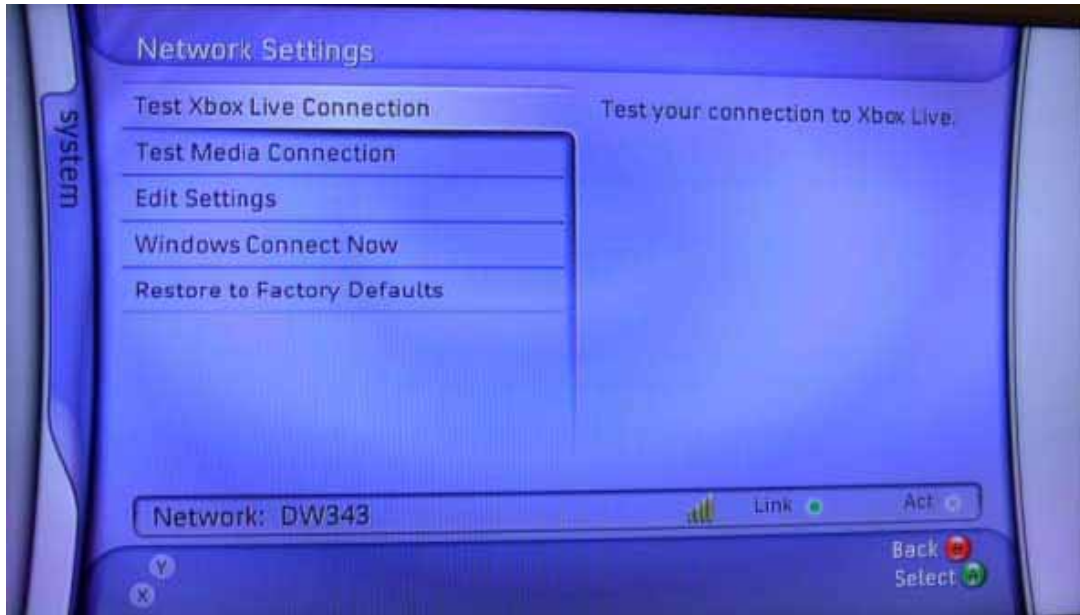
When prompted, select Test Media. Press **A** to continue.



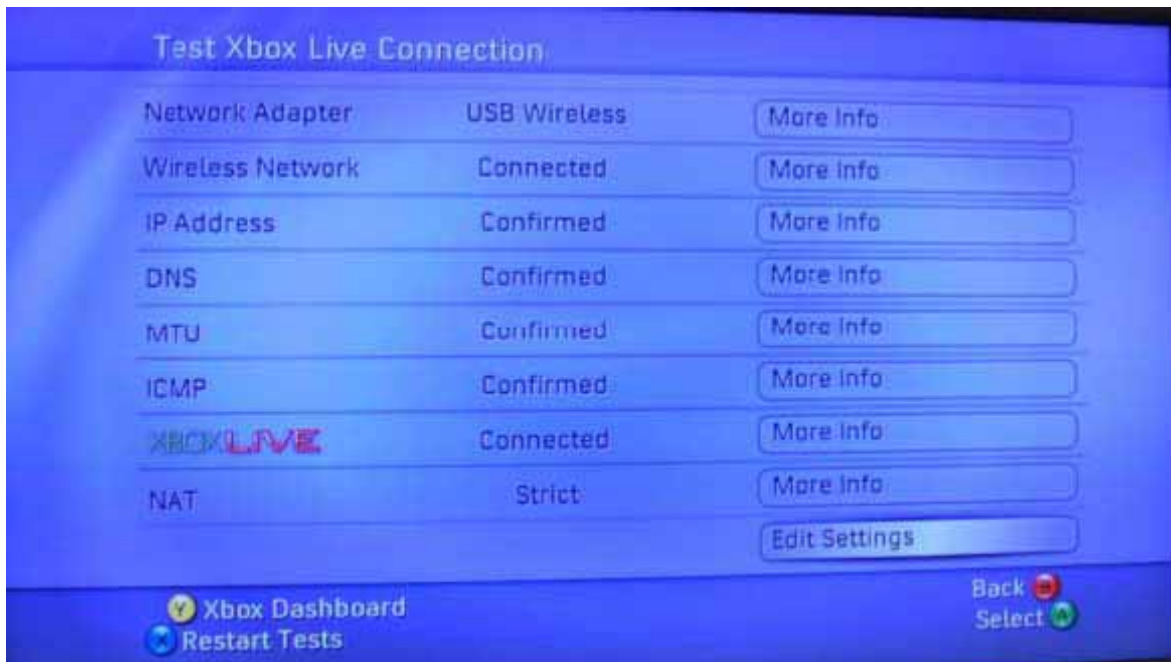
Note: Test Media is testing the Xbox's connectivity with the Access Point / router (trying to get an IP address from the router). This is LAN side activity and should be successful even without an Internet connection.

Step**Action****12**

Return to the Network Settings menu and select Test Xbox Live Connection (1st selection). Press **A** to continue.

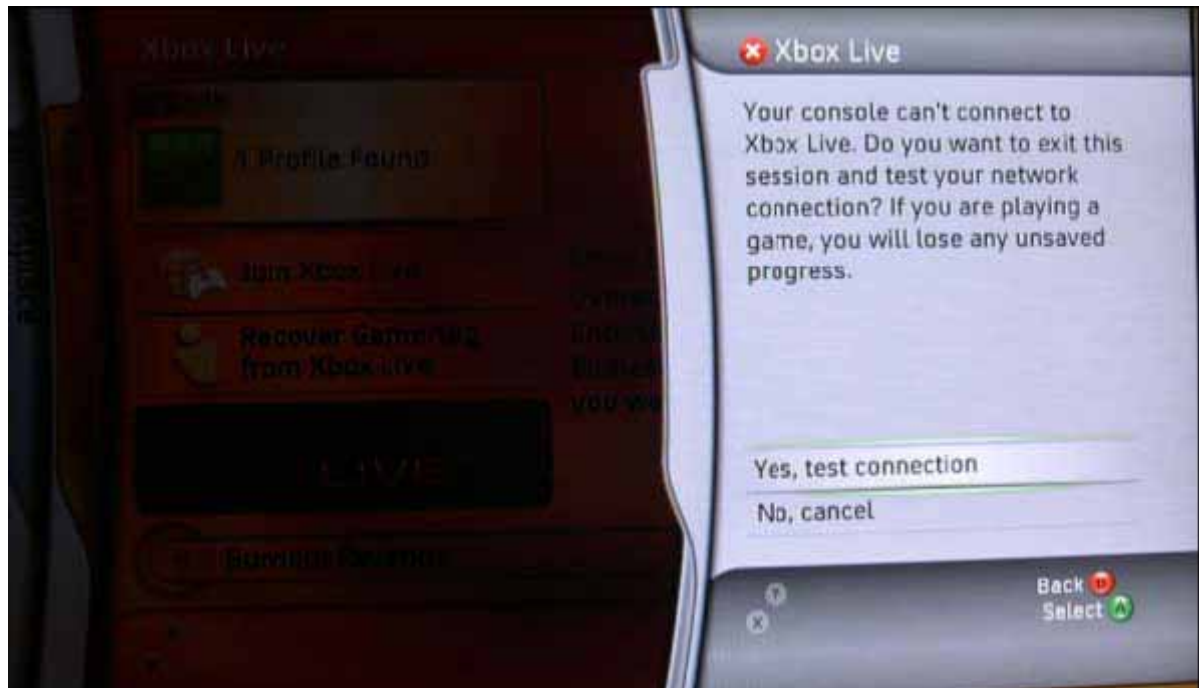
**13**

The Test Xbox Live Connection results should show as connected (IP address was successfully received from the router). If the Connection Failed screen is displayed, continue to step 14.



Wireless Xbox 360® Setup Procedure (continued)

Step	Action
14	If the connection status to Xbox Live shows failed, it is necessary to power cycle the Xbox 360®. It should connect automatically to the wireless after the power cycle.



We hope this information was helpful. If you need further assistance and would like to call or email Verizon Support please visit the [Contact Verizon Support](http://www22.verizon.com/Residential/Support/ContactUs/ContactUs.htm) page to lookup the number which services your area. <http://www22.verizon.com/Residential/Support/ContactUs/ContactUs.htm>

[Verizon FiOS TV](#) | [Verizon Fios Internet](#) | [Verizon FiOS Phone](#) | [Verizon DSL](#) | [Verizon Support](#)
[Verizon Wireless](#) | [Verizon Bundle Up and Save Packages](#) | [View all Verizon Specials](#)